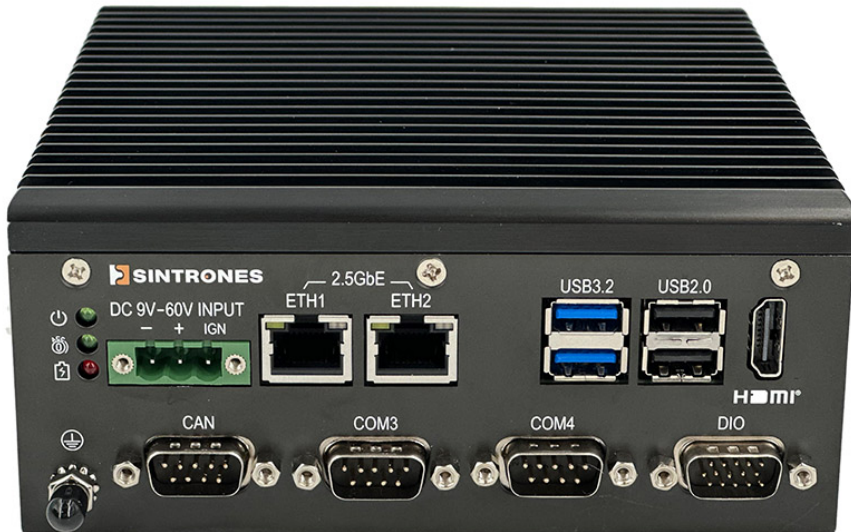


1029.00 EUR

incl. 19% VAT, plus [shipping](#)

- DIN-rail !
- 2x 2.5GbE !
- M12 !
- Backup Batterie Support !



Support: [Specifications](#)

- Industrial Grade Amston Lake Processor and Ethernet Controller
- Intel® Twin Lake Processor SKU Available
- 2 x 2.5GbE for IoT Devices Connectivity
- 1 x Built-in CAN FD for Vehicle Device Communication
- Dual NVMe SSD Support for NVR Applications
- Built-in Watchdog and Smart Power Management for System Health Monitoring
- Supports DIN-rail and Wall-mount Installation

Prozessor / Graphics

Memory

Security

Intel N150

Intel Graphics

1 x SO-DIMM DDR5 up to 16 GB

1 x TPM 2.0

Watchdog: Auto reset for unresponsive system

	1 x HDMI® with support for 4K@60Hz as specified in HDMI 2.0b
	1 x Line-out, 1 x Mic-in (Optional)
	• 1 x 2.5GbE from I226-IT via RJ-45 or M12 X-code for PoE model
	• 4 x GbE* from Marvell Ethernet Switch w/ PoE (PSE Class 3: 15W) via RJ-45 or M12 X-code
Interface	* Share with 1GbE bandwidth; Power budget: 60W **Non-PoE model: 2 x 2.5GbE
	1 x CAN 2.0
	2 x USB 3.2, 2 x USB 2.0
	2 x RS-232/422/485 ports, expandable with 4 optional COM ports
	8 x DI (9-60VDC), 4 x DO (12VDC/100mA)
INTERNAL EXPANSION	1 x M.2 3042/3052 Key B for WWAN with dual Nano SIM support
	• 1 x M.2 2230 Key E for Wi-Fi/BT
	• 1 x M.2 2280 Key M for NVMe SSD
	• 1 x M.2 2280 Key M for NVMe/SATA SSD
STORAGE (Internal)	Windows 11 IoT Enterprise LTSC, Ubuntu 22.04/24.04 LTS
Operating System / SDK	Processor N150: -30°C ~70°C (-22°F~158°F) with 0.6m/s airflow * Operating temp. varies by accessories installed.
Operating Temp.	-40 ~ 80°C (-40°F ~ 176°F)
Storage Temp.	10% RH – 90% RH (non-condensing)
Relative Humidity	CE, FCC Class A, UKCA, E-Mark
Certification / Standard	IEC 60068-2-64, random, 2.5G@5~500Hz, 1hr/axis
Vibration	MIL-STD-810H, Method 514.8, Procedure I, Category 4
Shock	MIL-STD-810H, Method 516.8, Procedure I, trucks and semi-trailers=15G (11ms)
Ingress Protection	IP40 DC 9 – 60V Input Ignition detection, Smart Power Management
Power	Battery Backup Unit (BBU) Backup battery for system power backup * Non-PoE model only
	Aluminum Alloy with Fanless Design
	6 x SMA connector panel mount hole
Mechanical	DIN rail, Wall-mount
	1.90kg (4.19 lb)
	M12 PoE model: 150 x 150 x 87 mm (5.91 x 5.91 x 3.43 in.)
	VBOX-3132P-yyy-zz
	(yyy=M12X=M12 interface, yyy = Empty=RJ-45 interface; zz=A8=Intel Atom x7835RE, zz=A4=Intel Atom® x7433RE)
ORDERING INFORMATION	VBOX-3132-D25-M12X-zz (zz=A8=Intel Atom® x7835RE, zz=N4=Intel® Processor N150)
	VBOX-3132-D25-zz (zz=N4=Intel® Processor N150)